

Communities Divided by Climate Change?



Arctic Marine Development in the newly opening seas

With more open water, outsider-driven development (oil, minerals, shipping, infrastructure, military) is moving from remote terrestrial regions into the marine “community garden” of the arctic communities.

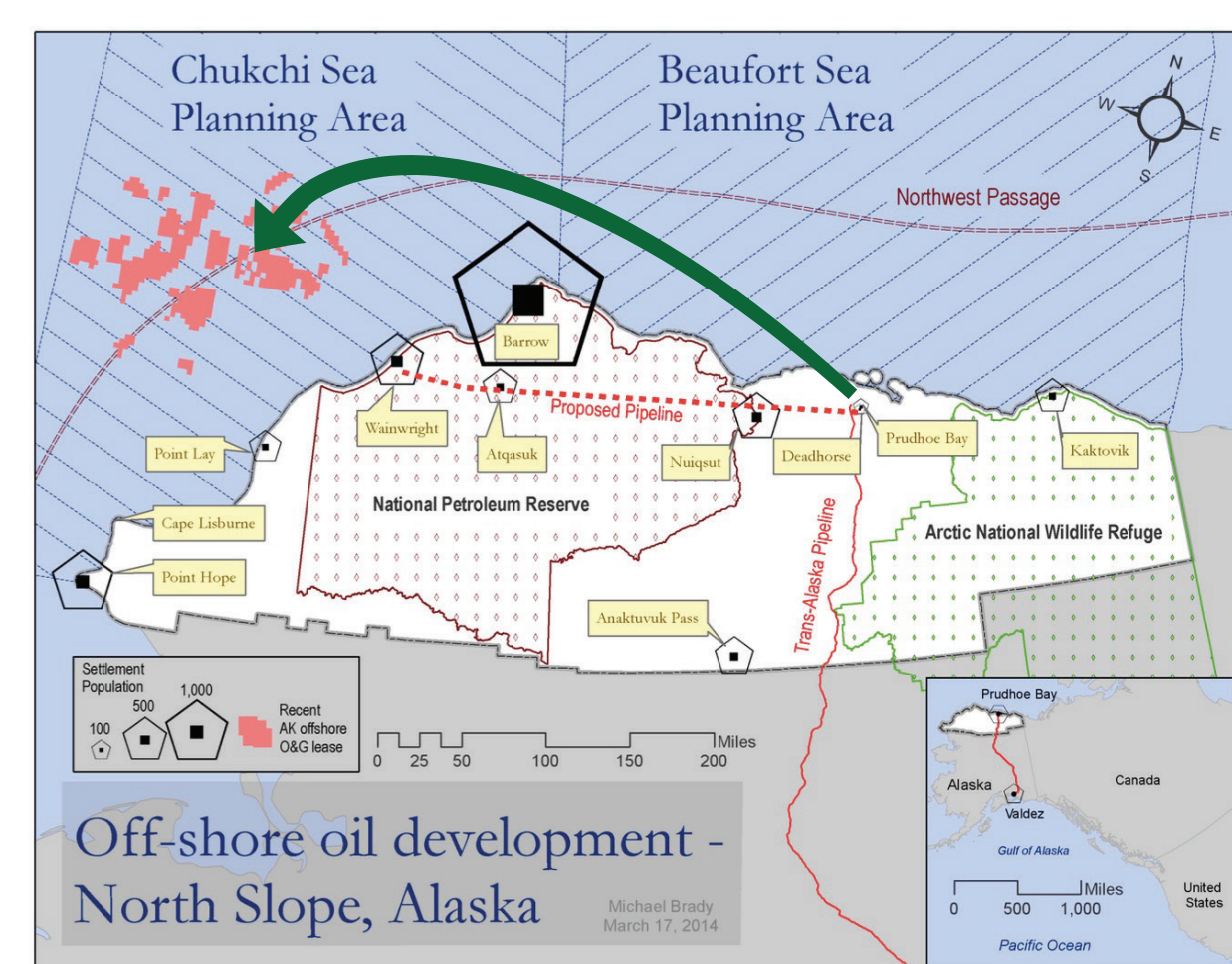


Native Voices on the dilemmas of development

This film, based on field research conducted in the arctic, presents interviews with Alaska Arctic Natives and residents on the dilemmas of offshore and expanded oil exploration that provides revenue and increases the risk to their subsistence harvesting and communities.

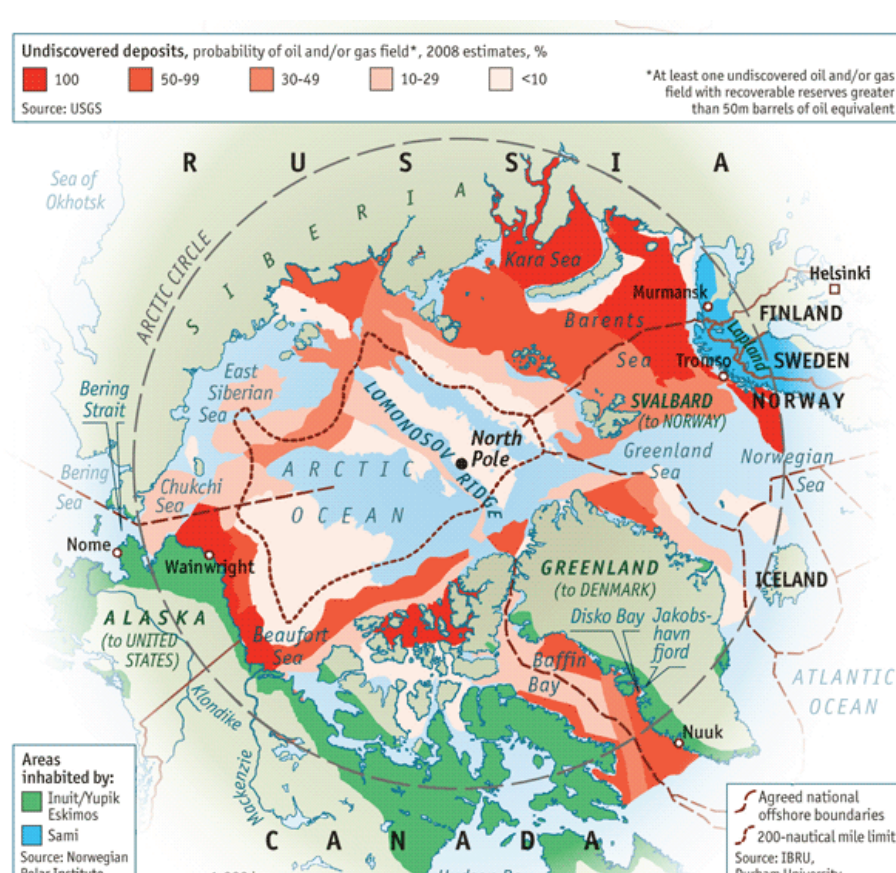
Resources

oil



The marine arctic will become a new prospecting grounds for oil, minerals, and shipping. This moves outsider-driven development from remote terrestrial regions into arctic communities’ marine garden on which they depend for subsistence and cultural survival.

Minerals



Shipping



Risks

New development provides needed revenue but also brings increased risk to these communities’ survival – risks ranging from oil spills to marine mammal disturbance to large outsider in-migration and industrial development.



Community

The communities are in conflict over the need for continued revenue and the potential risks; the interviews in this film explore these conflicts and the research examines the socio-economic dimensions of arctic community sustainability in the face of emerging challenges precipitated by climate change.

